

# Location Map



A-101, Orchard Point, Palace Orchard, Near Amarnath Colony, Kolar Road, Bhopal - 42  
 Tel.: 98065 47465, 98065 47467, 89599 10932, 89599 10933  
 website : [www.thesignaturegroup.co.in](http://www.thesignaturegroup.co.in)

Associate Partner  
**Aaradhya Infra**  
 Treasure Tower,  
 Kolar Road, Bhopal

Architect -  
**Ar. Vipin Chouhan**

Marketed by -  
  
**Winkers**

This brochure is purely conceptual & not a legal offering. All visual photographs used in this brochure are artists impressions. All specifications, sizes & layout etc. are tentative & subject to such variations, additions, modifications as decided by the Architects or by the Promoters.

Inspiring Spaces. Celebrating Life.



*Signature*  
 Residency

Creative ARTS 990779000



More  
SPACE

Celebrate in the sheer  
expanse of space with apartments  
that give every family member  
an exclusive world of their own



More  
STYLE

Enjoy the highest  
standards of living,  
perfectly complemented  
with world class facilities.

## Club House

Signature  
Residency



More  
AMENITIES

Experience life with all amenities  
that your need to live life king size.  
Amenities

Swimming Pool with Changing Rooms

Gymnasium & indoor games

Party Lawn

Tot Lot

Landscaped Sit Out

Netted Cricket Pitch

Grand Entrance

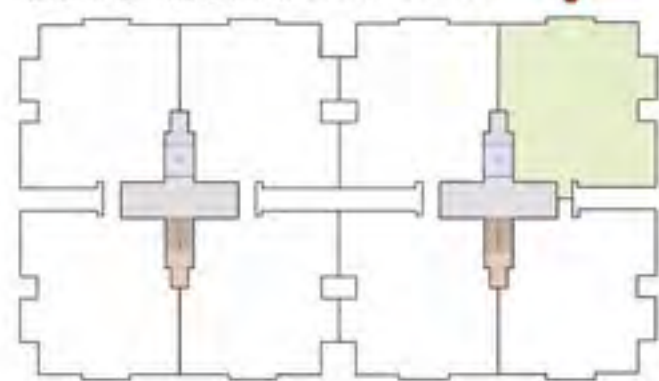
Fountain

Luxurious Foyer

Senior Citizen Seating



Sr.HIG (3BHK) FLOOR PLANS



Sr. MIG (2BHK) FLOOR PLANS



## Specification

■ <b>STRUCTURE</b>	: Earth quake resistant RCC Framed Structure	■ <b>KITCHEN</b>	: Vitrified tiles
■ <b>WALLS</b>	: Brick masonry	■ <b>BALCONY</b>	: Exterior grade ceramic tiles.
■ <b>DOORS</b>	: Moulded panel doors	■ <b>KITCHEN</b>	: Granite slab for Kitchen platform with sink & ceramic tiles dado up to 2' height
■ <b>WINDOWS</b>	: Aluminum windows with Iron grill.	■ <b>TOILETS</b>	: Concealed CP Fittings & Sanitary ware of Standard make.
■ <b>FLOORING</b>		■ <b>PAINTING</b>	: Internal painting with distemper. External painting with weather shield paint finish.
Drawing / Dining	: Vitrified tile	■ <b>ELECTRICAL</b>	: Concealed copper wiring, Modular switches, circuit security through MCBs.
Master Bedroom	: Wooden laminated Flooring	■ <b>TELEPHONE</b>	: Concealed telephone point in drawing / dining.
Other Bedroom	: Vitrified tiles	■ <b>INVERTOR</b>	: Concealed inverter wiring.
Toilets	: Combination of designer anti skid tiles, matching designer tiles upto 7'		



*A fully guarded community space for secured and pleasant living which allows you to keep your security worries aside and live a peaceful and assured life.*

A Safe &  
Secure space



## Our prestigious projects...

Signature Group has built a number of prestigious projects at numerous locations in Bhopal. Every project has been completed with unique and futuristic aspects with impressive locations.

### Current Projects-

Signature City, Katara Hills, Bhopal

Signature Residency, Kolar Road, Bhopal

Signature Greens, Kolar Road, Bhopal

Signature Crown, Kolar Road, Bhopal

### Upcoming Projects-

Signature 99, Kolar Road, Bhopal

Signature Town, Kolar Road, Bhopal

Signature Heights, Kolar Road, Bhopal

